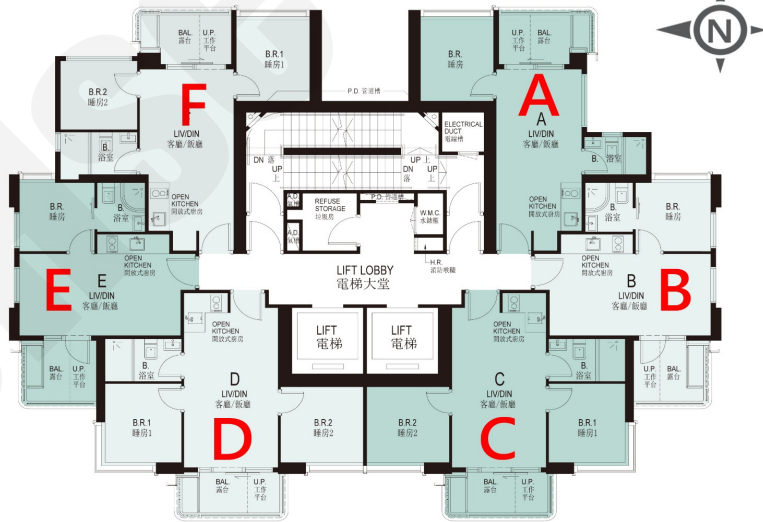


澄天

價單1號

以最高5%折扣計算
制作日期: 2023-10-26



A: 1房 325'		
樓層	訂價	折實價5%
6	\$5,528,000 @\$17,009	\$5,251,600 @\$16,159
7	\$5,612,000 @\$17,268	\$5,331,400 @\$16,404
8	\$5,756,000 @\$17,711	\$5,468,200 @\$16,825
9	\$5,791,000 @\$17,818	\$5,501,450 @\$16,928
12	\$5,896,000 @\$18,142	\$5,601,200 @\$17,234
15	\$5,932,000 @\$18,252	\$5,635,400 @\$17,340
18	\$6,123,000 @\$18,840	\$5,816,850 @\$17,898
22	\$6,486,000 @\$19,957	\$6,161,700 @\$18,959

B: 1房 287'		
樓層	訂價	折實價5%
6	\$4,800,000 @\$16,725	\$4,560,000 @\$15,889
7	\$4,873,000 @\$16,979	\$4,629,350 @\$16,130
8	\$4,998,000 @\$17,415	\$4,748,100 @\$16,544
9	\$5,028,000 @\$17,519	\$4,776,600 @\$16,643
12	\$5,119,000 @\$17,836	\$4,863,050 @\$16,944
15	\$5,150,000 @\$17,944	\$4,892,500 @\$17,047
18	\$5,344,000 @\$18,620	\$5,076,800 @\$17,689
22	\$5,871,000 @\$20,456	\$5,577,450 @\$19,434

C: 2房 400'		
樓層	訂價	折實價5%
6	\$6,903,000 @\$17,258	\$6,557,850 @\$16,395
7	\$7,009,000 @\$17,523	\$6,658,550 @\$16,646
8	\$7,188,000 @\$17,970	\$6,828,600 @\$17,072
9	\$7,232,000 @\$18,080	\$6,870,400 @\$17,176
11	\$7,319,000 @\$18,298	\$6,953,050 @\$17,383
12	\$7,363,000 @\$18,408	\$6,994,850 @\$17,487
15	\$7,408,000 @\$18,520	\$7,037,600 @\$17,594
18	\$7,542,000 @\$18,855	\$7,164,900 @\$17,912
20	\$7,694,000 @\$19,235	\$7,309,300 @\$18,273
22	\$7,848,000 @\$19,620	\$7,455,600 @\$18,639

D: 2房 400'		
樓層	訂價	折實價5%
6	\$6,837,000 @\$17,093	\$6,495,150 @\$16,238
7	\$6,941,000 @\$17,353	\$6,593,950 @\$16,485
8	\$7,119,000 @\$17,798	\$6,763,050 @\$16,908
9	\$7,162,000 @\$17,905	\$6,803,900 @\$17,010
11	\$7,248,000 @\$18,120	\$6,885,600 @\$17,214
12	\$7,292,000 @\$18,230	\$6,927,400 @\$17,319
15	\$7,336,000 @\$18,340	\$6,969,200 @\$17,423
18	\$7,469,000 @\$18,673	\$7,095,550 @\$17,739
20	\$7,619,000 @\$19,048	\$7,238,050 @\$18,095
22	\$7,773,000 @\$19,433	\$7,384,350 @\$18,461

E: 1房 266'/287'		
樓層	訂價	折實價5%
6	\$4,633,000 @\$16,199	\$4,401,350 @\$15,389
7	\$4,723,000 @\$16,514	\$4,486,850 @\$15,688
8	\$4,899,000 @\$17,129	\$4,654,050 @\$16,273
9	\$4,929,000 @\$17,234	\$4,682,550 @\$16,373
11	\$4,989,000 @\$17,444	\$4,739,550 @\$16,572
12	\$5,019,000 @\$17,549	\$4,768,050 @\$16,672
15	\$5,050,000 @\$17,657	\$4,797,500 @\$16,774
18	\$5,174,000 @\$18,028	\$4,915,300 @\$17,126
20	\$5,278,000 @\$18,390	\$5,014,100 @\$17,471
22	\$5,437,000 @\$18,944	\$5,165,150 @\$17,997

F: 2房 325'/400'		
樓層	訂價	折實價5%
6	\$6,606,000 @\$16,515	\$6,275,700 @\$15,689
7	\$6,767,000 @\$16,918	\$6,428,650 @\$16,072
8	\$6,941,000 @\$17,353	\$6,593,950 @\$16,485
9	\$6,983,000 @\$17,458	\$6,633,850 @\$16,585
11	\$7,067,000 @\$17,668	\$6,713,650 @\$16,784
12	\$7,110,000 @\$17,775	\$6,754,500 @\$16,886
15	\$7,153,000 @\$17,883	\$6,795,350 @\$16,988
20	\$5,989,000 @\$18,428	\$5,689,550 @\$17,506
22	\$6,121,000 @\$18,834	\$5,814,950 @\$17,892

紅色為最高售價、最高平均呎價；藍色為最低售價、最低平均呎價